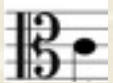


Education



Engagement



Exposure

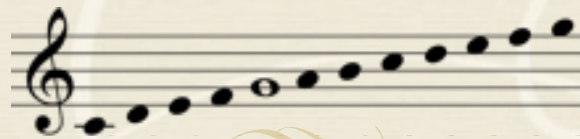
*Support Jazz music education
for the youth of
greater Mobile...*

*Join
The Clef Note Society
today!*



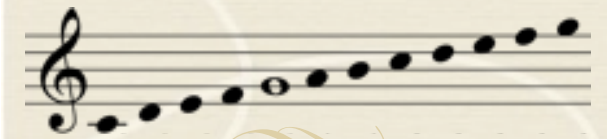
The Clef Note Society
P. O. Box 663
Mobile, AL 36601
mobilebigband.org

The Clef Note Society and The Jazz Studio are each part of the educational program of Mobile Big Band Society, Inc., a Sec. 501(c)(3) organization of players and fans of Big Band music.



*The
Clef Note
Society*

*An exclusive network in support of
The Jazz Studio
a program of
Mobile Big Band Society, Inc.*





*Membership in the exciting new
Clef Note Society
has its benefits!*

*With your help, youth musicians
and aspiring Jazz artists
throughout the greater Mobile
area will gain valuable music
instruction through master
classes, mentorship, field trips
and exposure to live
performances!*

*In return, you will gain access
to a host of exciting events and
activities as part of an exclusive
network of Jazz and Big Band
music enthusiasts, paving the
way for future generations
of Jazz artists!*

The Jazz Studio, a program of Mobile Big Band Society, Inc., was established with the goal of providing ongoing Jazz music education programs for the youth of the greater Mobile, Alabama area. Interestingly, it was native Mobilian, James Reese Europe, an accomplished Jazz musician, who founded The Clef Club.

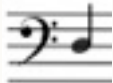

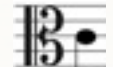
Europe was The Clef Club's first elected president and conductor of its symphony orchestra. The Clef Club Orchestra appeared at Carnegie Hall for the first time on May 2, 1912. They were so well received that they returned in 1913 and 1914. One American writer said that popular music first invaded the concert auditorium when Europe played Carnegie Hall. James Reese Europe achieved much in his short life, but his greatest achievements were surely to come, and it is fair to say that the whole history of Jazz would have been different had Europe not met an untimely death at the end of World War I.

The Clef Note Society endeavors to honor this rich legacy through supporting excellence in music education, that fosters an appreciation for and the preservation of Jazz as a great American art form.

The Jazz Studio a program of Mobile Big Band Society, Inc. welcomes all contributions and thanks you for your donation. Your gift is tax deductible as a charitable contribution to the full extent allowed by law for income tax purposes. For tax purposes, we acknowledge that no goods or services were exchanged for this donation.

Membership in the The Clef Note Society is available at varying levels of support, which includes sponsorship of students in TJS/MBBS programs, field trips and master class experiences. Additional benefits include priority seating at TJS/MBBS sponsored events, participation in exclusive VIP activities and quarterly issues of our lively e-newsletter, "The Clef Note," premiering in April 2016. For more information call (251) 545-4244.

*Support
The Clef Note Society!*

	BASS CLEF LEVEL	\$500
	TREBLE CLEF LEVEL	\$250
	ALTO CLEF LEVEL	\$100

I would like to make a donation of:

\$25 \$50 \$75 Other \$ _____

Please make check or money order payable to:

Mobile Big Band Society

Mail to: The Jazz Studio

P.O. Box 663

Mobile, AL 36601